

## 400 Wilkes Blvd. Square Footage

		PRIORITY
HHC (Class 6)	556.452	B
<b>Lobby</b>	<b>216</b>	A
Reception	299	A
Bathroom 1	76.096	C
Steve's Office (Off 1)	208.86	C
Brenda's Office (Off 2)	168.04	C
Liz's Office (Off 3)	117.711	A
Tania's Office (Off 4)	119.00	A
	<b>1761.159</b>	

<b>Kitchen</b>	<b>252.068</b>	A
CDL (Computer Lab 2)	286.98	C
Bathroom (4)	99.05	C
Const (Class 1)	372.400	A
Rance's Office (Off 16)	117	A
Computer Lab 1	550.95	A
North Class (2)	887.12	B
	<b>2565.570</b>	

Conference Room 1	173.75	A
Bathroom (5)	99.05	C
Bryon's Office (Off 14)	117	B
Bathroom (3)	126	C
Storage/Fridge	40.5	C
	<b>556.300</b>	

Josh's Office (Off 24)	139.113	A
Class (4)	293.6	B
Nick's Office (Off 23)	117.711	B
Nancy's Office (Off 17)	117.711	A
Ranjana's Office (Off 15)	117.711	B
Lucky's Office (Off 13)	73.86	A
Bathroom (2)	149.814	C
Copy Room	99	A
	<b>1108.520</b>	

A Total Office/ Classroom = 2857

B Total = 3135

		PRIORITY
Class (5)	322.271	B
Anissa's Office (Off 9)	111.55	A
Travis' Office (Off 18)	117.711	B
Conference Room (2)	131.197	A
Dustin's Office (Off 22)	117.711	A
Felecia's Off (Off 6)	97.5	A
John H Office (Off 12)	80.44	B
Terry's Office (Off 11)	117.711	B
Storage/WIOA (Off 5)	74.3	C
	<b>1170.391</b>	

File Room	208	C
Storage/Pantry	147.436	C
Marcy's Office (Off 21)	113.814	B
Dena's Office (Off 19)	103.782	B
Jerrell's Office (Off 20)	96.690	B
HVAC Shop Class (3)	367.02	C
ICTP Shop	367.02	C
Storage?	183.69	C
John's Office (Off 10)	100.86	B
Server Room	102.5	C
Elliott's Office	76.5	C
Cora's Office (Off 8)	101.09	A
Carrie's Office (Off 7)	125.44	A
	<b>2093.842</b>	

West Hallway	585.05	A
East Hallway	604.74	A
E/W Hallway # 1	143.2745	A
E/W Hallway # 2	240.178	A
E/W Hallway # 3	282.982	A
North Entry w/ Hall	258.013	A
Hall outside GED Inst.	101.83	A
	<b>2216.068</b>	

Kitchen = 252

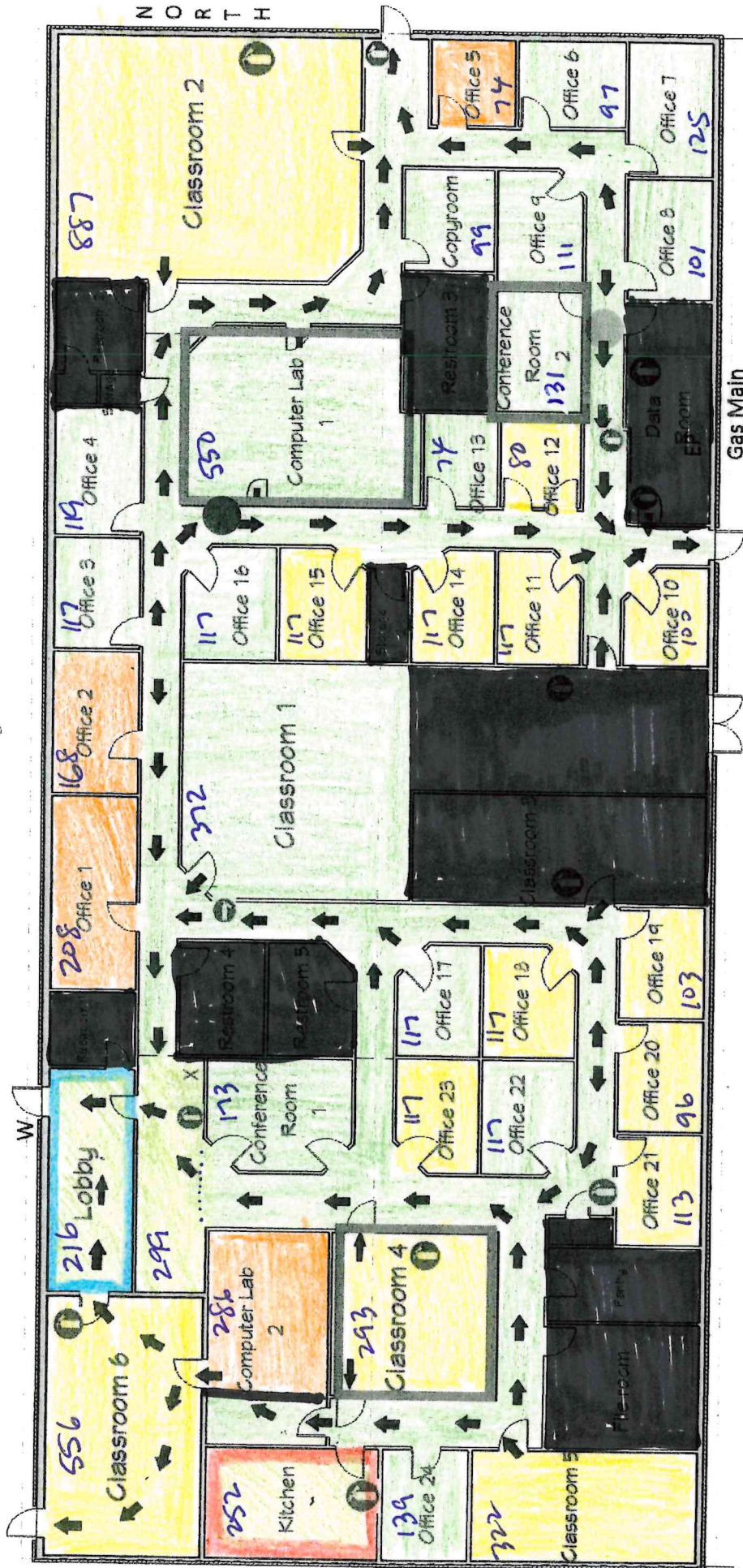
**11472**

Lobby = 216

A Total Hallway = 2216

C Total = 736

NOTE: Measurements provided therein are estimates and not guaranteed to be accurate. Bidders are encouraged to attend the Pre-Bid Conference on June 14 at 1:00pm to take their own measurements.



Key:  
A B C

Evacuation Route Marked by Black Arrow

Red X indicates First Aid Kit

Safe Zones marked in Blue

Red Circle with Fire Extinguisher marks Fire Extinguisher

Green Circle indicates You Are Here

Black W indicates Water shutoff

Gas Main indicates Gas shut off

Black EP indicates Electric shut off